

The CRM 203S-RF is a tri-element boundary layer through table condenser microphone, with a built-in mechanism that will allow the user to make the microphone disappear without having to physically remove it from the table. The microphone is also fitted with an electronic capacitive touch sensitive switch designed to be used for remote switching giving status red or green to identify when the microphone is live. Available in black Nextel (CRM 203S-RF) or satin nickel (CRM 203SN-RF)

Switch Features

- Electronic capacitive touch switch facilitating click / pop free switching of a microphone.
- Must be used in conjunction with a digital signal processor (dsp).
- Power requirements 12Vdc from regulated power supply
- 500mm 5 way ribbon colour coded cable, supplied with RJ 45 plug and supplied with RJ 45 coupler which allows connection via RJ 12 or RJ 45 plug back to dsp.
- Fitted with a magnetic reed switch designed to prevent unwanted feedback from retracted microphones on power up. The switch contact is closed (ON) when the microphones are in the raised position and open (OFF) when retracted. **This is not designed to be used for privacy muting.**

Microphone features

- Polar pattern: cardioid
- Balanced output
- Power requirements 9-48V phantom power
- Cable 2m 2 core + screen
- Immune to RF artifacts

Touch Switch
Bi-colour red/green



Securing Nut

Installation

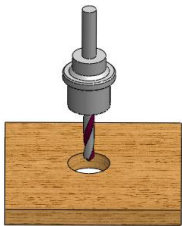


Fig A



Fig B

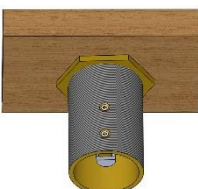


Fig C

- 1) Drill a 58mm (2.25") hole through the table see fig A.
- 2) Remove the nut and fit the CRM 203S-RF through the 58mm/2.25" hole see fig B.
- 3) Replace nut and tighten to the underside of the table see fig C.
- 4) Connections for each mic will be identified as follows: mic A white cable in line with screws, mic B (90 deg from mic A) black cable and mic C (90 deg from mic A) black cable with red tag Red Phase +, White Phase - and screen Ground.
- 5) Switch wiring connections:

Please note programming will be needed on the DSP side to allow the microphone to be muted.

Cable colour	Function	RJ 45 Pin number
Red	Red LED	2
Blue	-ve switch	3
Brown	+ve 12V dc switch	4
Yellow	Switch Logic control	5
Green	Green LED	6

- 6) Grey 2 core (red and blue wires) are to be used for remote switching, screen is not used. Also note switch is open circuit when the mic is down. **Please take note programming will be needed on the DSP side to allow the microphone to be muted once retracted.**
- 7) Using p-clamps provided fix cables to the underside of the table ensuring there is sufficient slack in the cable loom for the mic to operate See fig D.

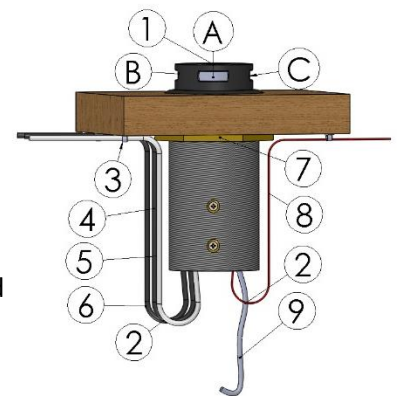


Fig D, key:

- 1) Head in raised position.
- 2) Loop cable allowing at least 25mm (1") out of the bottom of the CRM.
- 3) Fit 4 x supplied P-clamp using self-tap screws.
- 4) White audio cable mic A
- 5) Black audio cable mic B
- 6) Black audio cable mic C identified with red tag.
- 7) Securing Nut.
- 8) Touch switch ribbon cable.
- 9) Grey reed switch cable red and blue cores