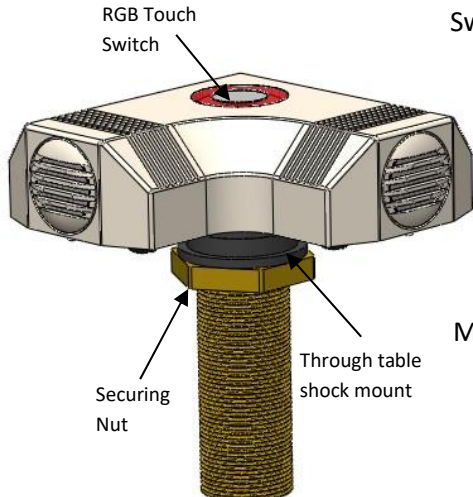


The CS 2VS-RF RGB is a dual element V-shaped boundary layer microphone with a half cardioid polar pattern. Designed for huddle rooms or to be placed at the corner of the table, the microphone is fitted with a RGB electronic capacitive touch sensitive switch designed to be used for remote switching. Available in black Nextel (CS 2SV-RF RGB) or Stain Nickel (CS 2SVN-RF RGB).



**Switch Features**

- RGB electronic capacitive touch switch facilitating click/pop free switching.
- Programmable via a DSP to display up to seven colour combinations and operate in PTT, PTM or Latching modes.
- Works only in conjunction with supplied TS-C1 touch switch controller that accepts 6 way colour coded ribbon cable from RGB LEDs, a 2 way phoenix connector for connection to the reed switch and TS-OUT for connection to a DSP via a CAT-5 Ethernet cable.

**Microphone features**

- Half cardioid polar pattern.
- Balanced output that is immune to RF artifacts.
- Power requirements 9-48V phantom power.
- Cable 2m 4 core + screen.

Note: Microphone muting is controlled via DSP and activation of touch switch.

**Installation guide**

- 1) Pre-drill a 24mm/0.94” hole through the table. See fig A.
- 2) After removing the Nut and one shock mount push fit the microphone through the table. See fig B.
- 3) Replace shock mount and hand tighten nut to secure the microphone onto the table. See fig C.
- 4) Audio wiring connections:  
 Mic A: Red phase +, Black phase –  
 Mic B: Yellow phase +, White phase –  
 Ground (common to both elements): Screen  
 Note: microphone screen and TS-C1 ground must have a common ground connection.
- 5) TS-C1’s TS-OUT wiring for connection to DSP:

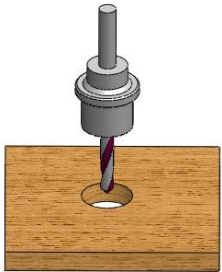


Fig A



Fig B

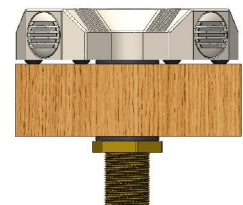
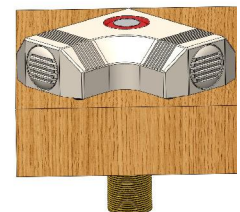


Fig C



Pin number	Function
1	Switch (Low indicating contacts closed on RS-IN )
2	Red LED (pulled low to illuminate)
3	Ground
4	+12V DC
5	Touch Switch Activated
6	Green LED (pulled low to illuminate)
7	Blue LED (pulled low to illuminate)
8	No connection

- 6) Affix TS-C1 under table.